



Thank you for your purchase of Echostreams OSS1A4-D5 1U Appliance System!

**1. Check the content** of the box. Please verify that your package contains the following:

#	Description	Image / Description	Qty
1	1U Enclosure		1
2	Drive Bay (optional)		1 set
3	Motherboard	Tyan S7106GM2NR	1
4	CPU and memory (optional)	Pre-installed upon request	1 set
5	Heat sink (optional)		2
6	Screw Sets*	for drives, motherboard, and rail / rack	3 sets
7	Power Cable*		2
8	Slide Rail Kit (optional)		1
9	This Quick Guide		1
10	Packaging box		1 set

\* Inside the accessories box. If any items are missing, please contact your authorized reseller or sales representative

## 2. Get familiar with the unit.

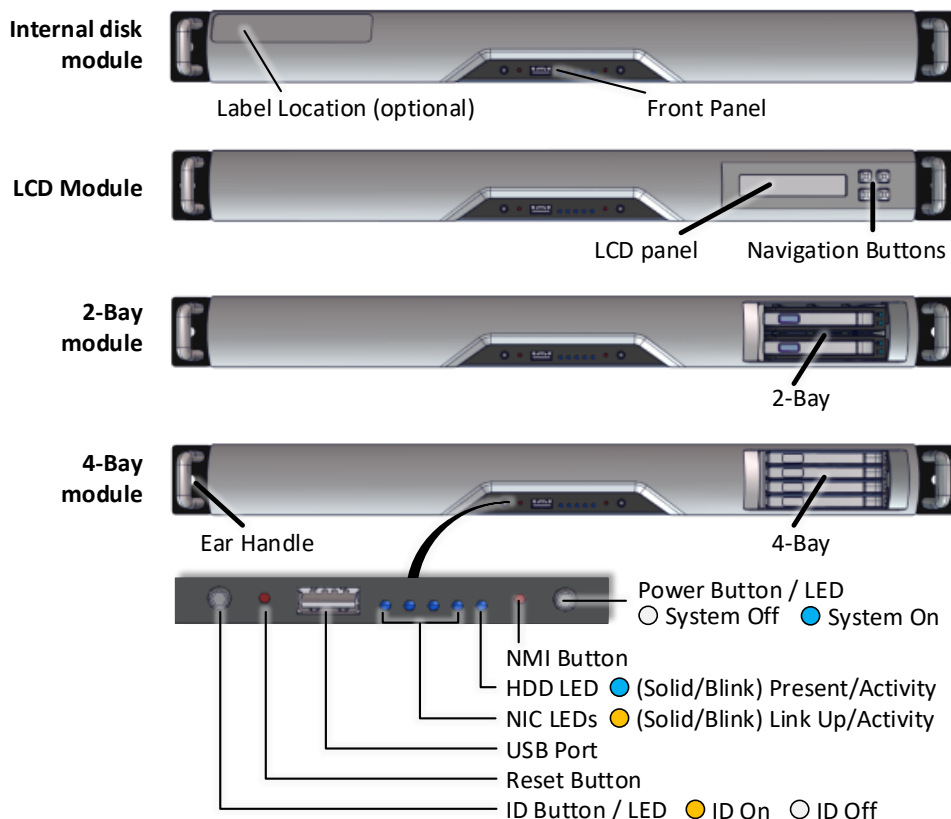
OSS1A4-D5 is a 1U appliance system based on dual Skylake V5 CPU and Tyan S7106GM2NR motherboard.

OSS1A4-D5 has a few options for disk modules:

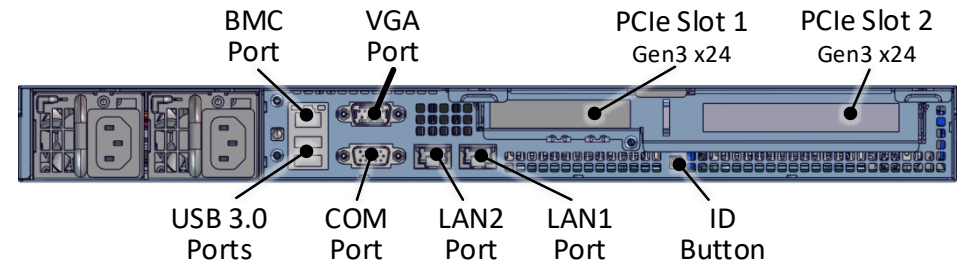
- **Internal:** Internal 2x disk module
- **LCD:** Internal 2x disk module + LCD
- **2-Bay:** 2x 2.5" 15mm bay module
- **4-Bay:** 4x 2.5" 7mm bay module

OSS1A4-D5 version with 4-Bay front module is the default configuration for OSS1A.

### Front View of the Unit

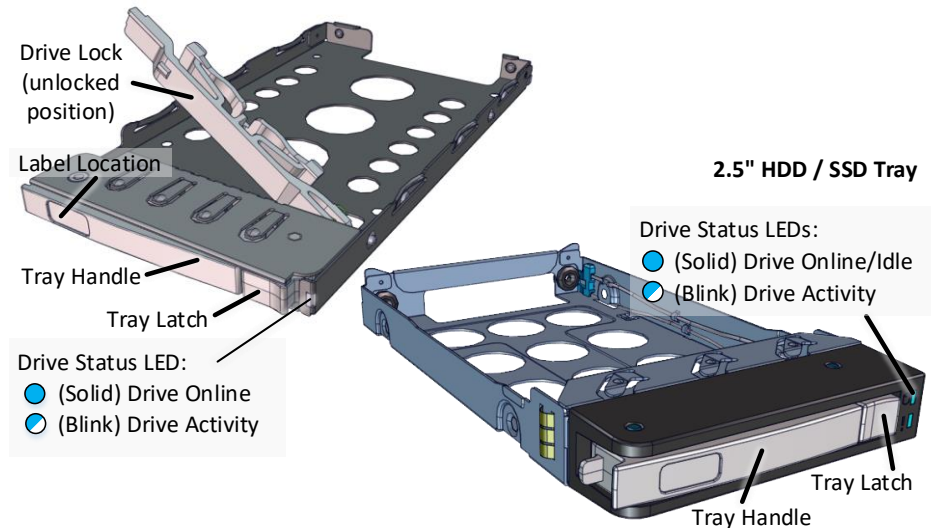


### Rear View

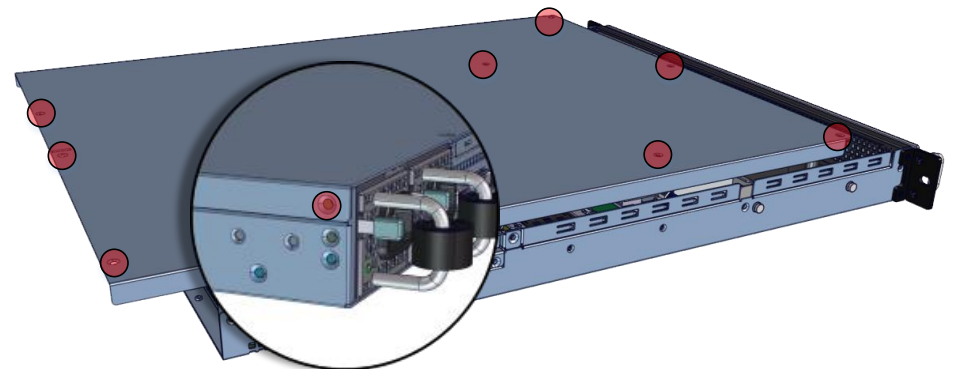


### Drive Tray

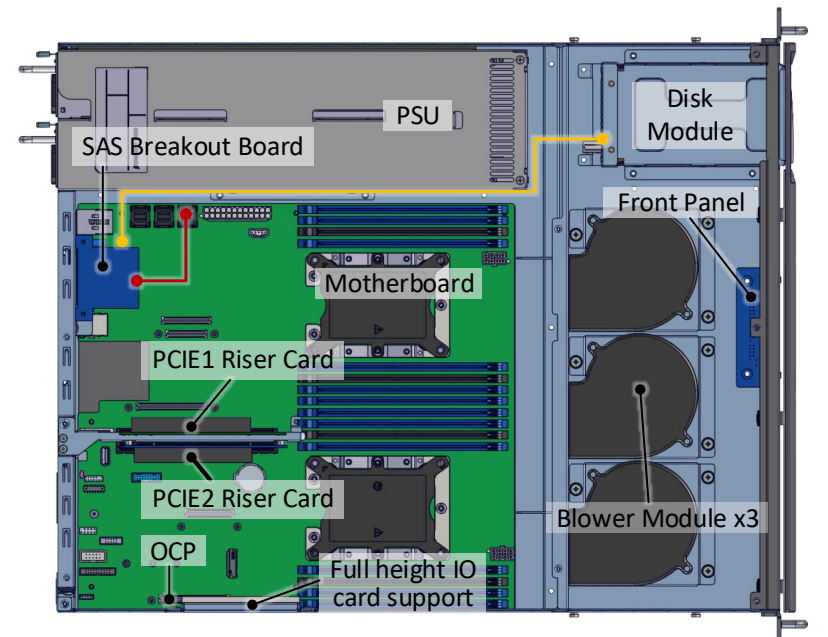
#### 2.5" 7mm HDD / SSD Tool-less Tray



**3. Remove the top cover** by removing the 8 screws on the top of the cover, one at the rear left side, and slide the cover towards the back of the unit.



**4. Inspect the internal** of the chassis. It consists of blower modules, PCIe riser cards for IO cards, and a Purley platform motherboard.



Installation and service of this product should be conducted by a trained personnel to avoid bodily injury from electric shock or heavy object



Observe ESD (Electrostatic Discharge) practices during integration to avoid possible damage to the board and / or other components

## 5. Install motherboard, CPU, and memory (may be sold separately) to their respective slots. Refer to the motherboard's TPS for details.

**Processors**

- Support for Intel Xeon Skylake Processor Family
- Dual LGA3647
- Max up to 205W TDP
- Chipset PCH Intel C622

**Memory**

- Support 8+8 DIMM slots
- Up to 512GB RDIMM, 1TB LRDIMM, 2TB LRDIM 3DS
- 6 Channels per CPU
- 1.2V
- Populate from A0, B0, C0, D0, E0, F0, B1, E1

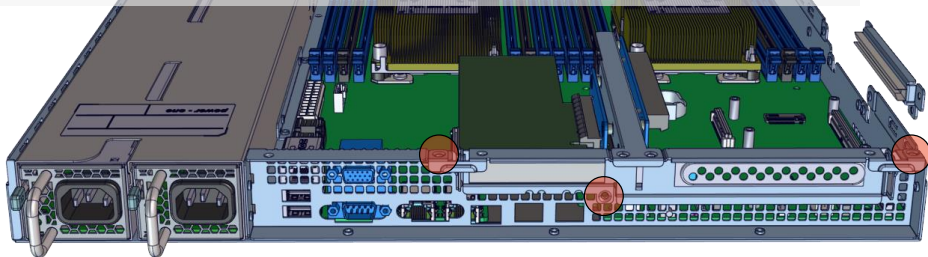
**PCIe Slots**

- Two PCIe Gen3 x24 slots
- PCIe1 linked to CPU1
- PCIe2 linked to CPU0
- OCP 1.0 PCIe Gen3x8 Mezz (CPU1) for LAN card

## 6. Install IO cards (may be sold separately) to PCI-slots. For more information, refer to the user's guide for the IO card.

Prepare the riser card assembly prior to installing IO cards.

1. Remove the riser card assembly by unscrewing 3 screws (red circles)
2. Remove full height IO card support if installing full height IO card
3. Lift the riser assembly upwards



Install the IO cards as follow:

1. Remove the PCIe slot cover
2. Insert IO card then secure with screw
3. Return the riser card assembly to unit
4. Replace full height card support to enclosure

## 7. Install disk(s) (may be sold separately) into the slots.

For enclosure with drive bay module, remove the tray first.



Below is the disk installation for 2.5" disk trays.

**2.5" 7mm Tool-less Drive Tray**

**2.5" 7mm SATA Drive**

**2.5" Drive Tool-less Tray**

**2.5" 15mm SATA Drive**

- Slide in drive with the IO connector side first to the back of the tray
- Snap hinge back to lock position
- Use M3 screws when HDD is used
- Insert the drive right side first as illustrated
- Then snap it to the tray
- Secure with screw when necessary

Labels: Drive Lock, Tray Handle, Tray Lock

To install drives to internal disk module:

1. Remove 4 screws from the bottom of the enclosure
2. Remove the disk module assembly and install up to two disks. Top disk is screwed from the sides (blue circles), bottom disk is screwed from underneath (yellow circles). Place the assembly to original position when done.

**8. Put the top cover.** Once we are finished with the internals of the system, close the top of the chassis.

**9. Place the unit to the rack.** Two types of slide rail (20" and 28" long) are available. Secure with screw as indicated. Please refer to Rail Kit Installation Guide on how to mount the enclosure to the rack.



**10. Power up** the enclosure by plugging in the AC cables at the back of the unit and press the power button.



**To remove the bezel,** remove the top cover, loosen 3 thumbscrews behind the front panel, and move the bezel forward. Multiple color of bezel (red, blue, etc.) is available.

